



SEAL ACCURA 

The word "SEAL" is in a bold, black, sans-serif font. "ACCURA" is in a regular, black, sans-serif font. To the right of "ACCURA" is a circular icon containing a checkmark and a leaf, with a dashed line around the bottom half of the circle.

Concept of Induction Sealing & Advanced Packaging Inspections

- Induction Sealing is used for package fabrication such as for cap sealing, which is a non-contact method of heating an inner seal to hermetically pack and seal the top of plastic/glass container.
- Package sealing integrity is crucial in ensuring product viability. A good induction seal prevents product leakage, is tamper proof, maintains product quality and fosters consumers confidence.
- The days of sampling for inspection and analysis to have quality control is nearing an end.
- Today, manufacturers are looking for 100% inspection of sealed containers without damaging the product.
- So, advanced packaging inspections are performed through closed bottle caps without degrading the product and without reducing line speeds.

Induction Sealing is used for a broad range of products in different industries such as:



Pharmaceutical



Nutraceutical



Food, Dairy and
Beverages



Cosmetics,
Health and
Beauty



Chemicals and
Paints

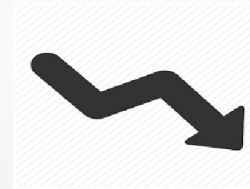


Animal Care and
Medicines

Risks of Improper Induction Sealing in Packaging Industry



Quality of the product cannot be maintained which decreases the product shelf life



Product's efficacy is affected and gets reduced



Leakage of product will lead to wastage and cause breakdown in machines



Poor merchandise state such as damaged containers, spoiled and contaminated products are major complications that put safety at risk

Why Seal Accura to Enhance Product Packaging



For an industry with high quality control requirements, sampling has become increasingly insufficient



Camera-based systems utilize extremely high sensitivity color cameras which can perceive faults only in the relatively narrow visible spectrum



Shubham utilizes sophisticated thermal imaging technology, combined with high throughput imaging & analysis software tool, to provide innovative solutions.

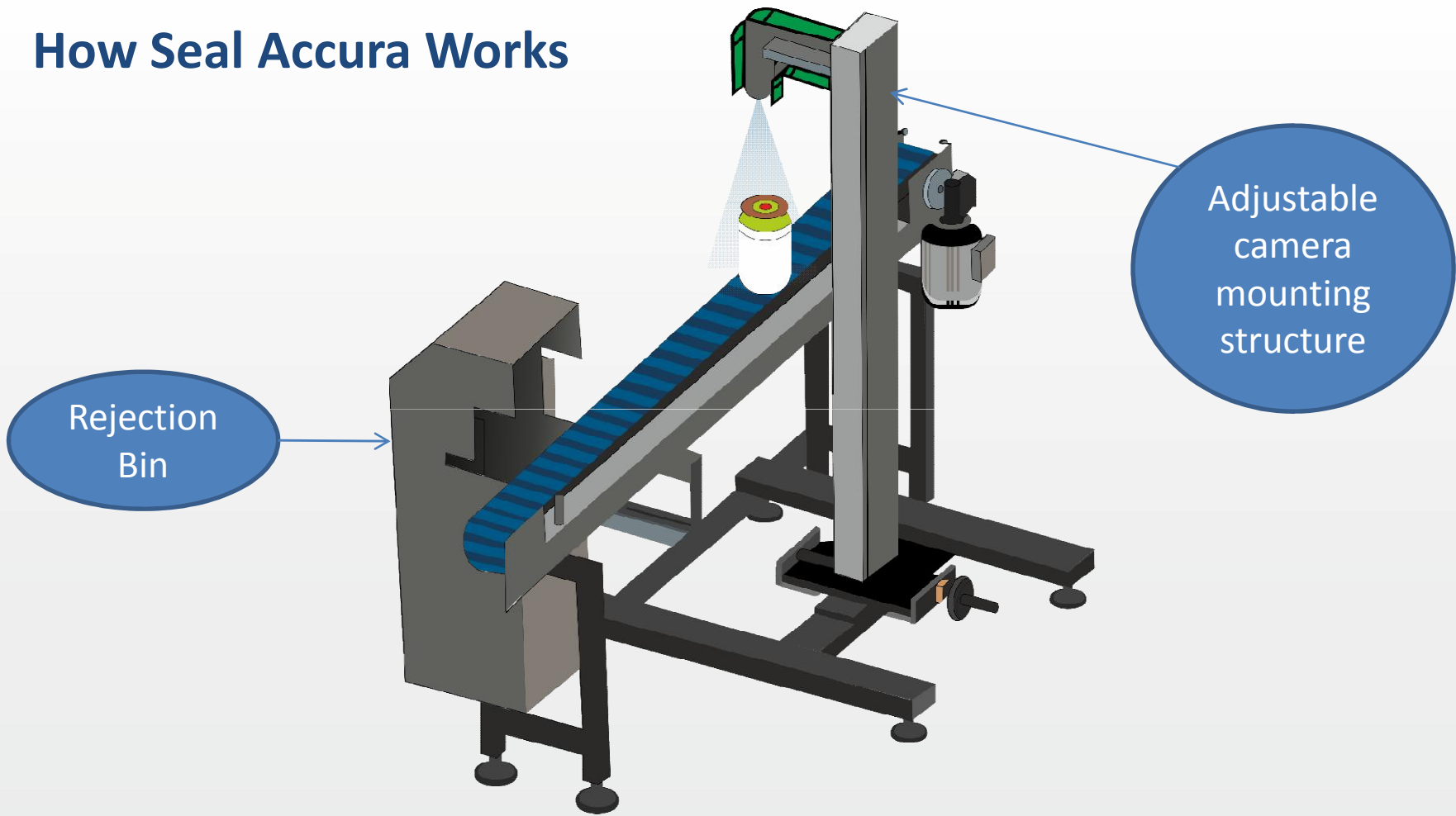


Shubham's Seal Accura with dynamic thermal imaging is a powerful software that enables in-line quality control by replacing package sampling approaches with continuous, non-invasive process verification that checks and then further ensures the safety and integrity of product packaging.



Our systems enable non-destructive and 100% comprehensive inspections to check the integrity of induction sealed bottles.

How Seal Accura Works

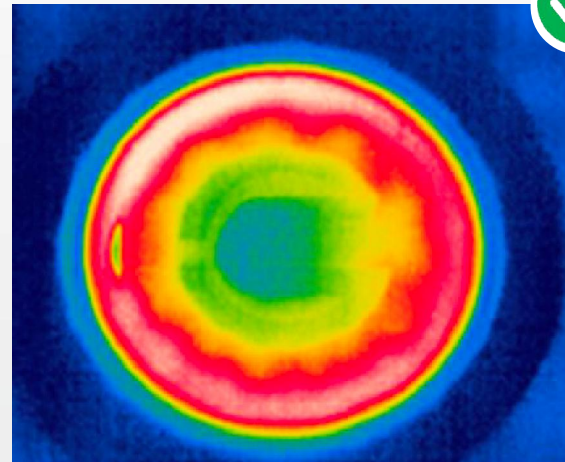


Features of Seal Accura

- Compact & Modular design of the system to place in existing conveyor in packing line
- High speed thermal image camera
- system can support multiple thermal cameras
- High speed industrial PC for efficient performance of the system
- color touch display for ease of operation
- system has password protection facility
- Various type of report generation facility
- PLC based control system to integrate with rejection mechanism & up/down stream machines
- Capable to design different rejection mechanism like pusher/diverter/air-blow and many more customized rejection solutions
- Various alarms interlocks
- easily suitable for multiple type of containers & caps
- high speed up-to 300* bottles per minute
- capable to design mechanical or conveying system as per GMP standards to deliver as a stand alone solution (optional)
- 21 CFR part 11 compliance (optional)

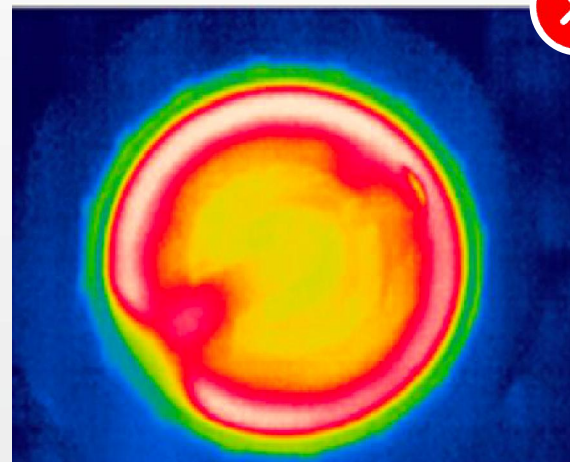
Case 1: Ok Bottle Challenge

Case 1: Ok Bottle Challenge

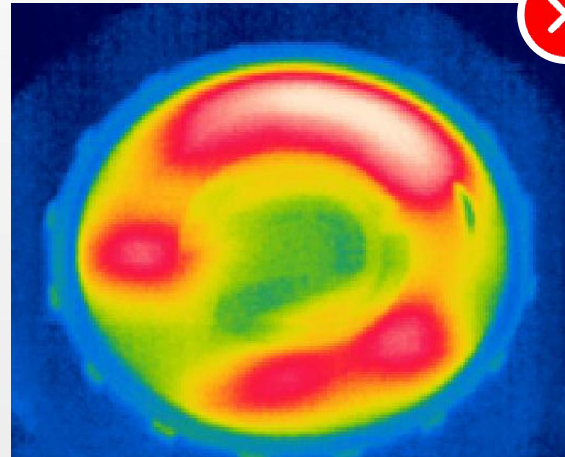


Case 2: PEEL OFF WAD (FLIPPED WAD)

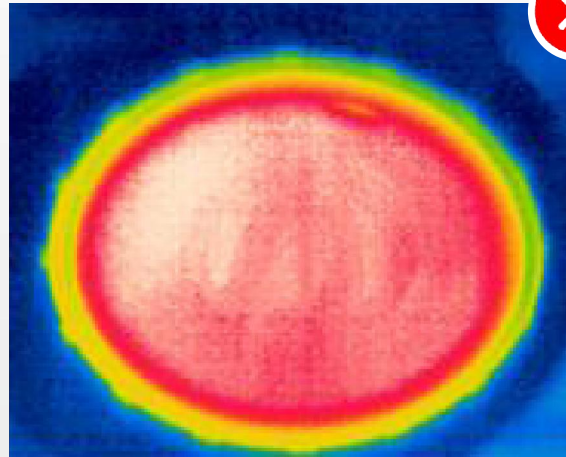
Case 2: PEEL OFF WAD (FLIPPED WAD)



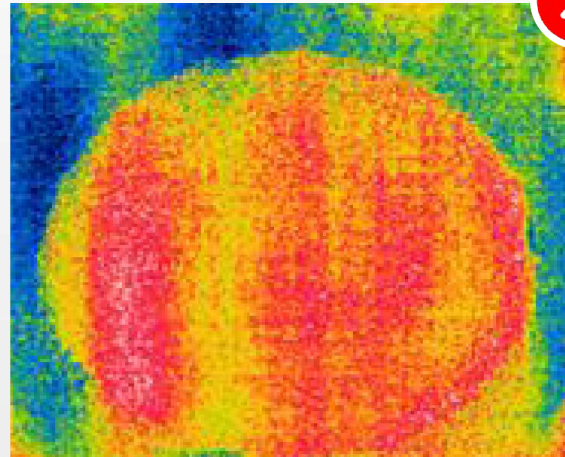
Case 3: OVER BURN



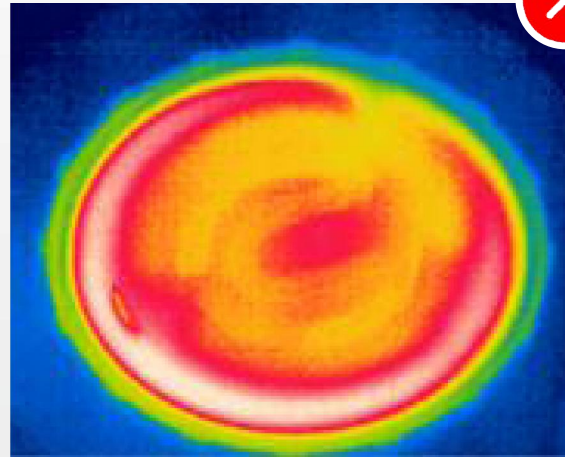
Case 4: UNDER BURN



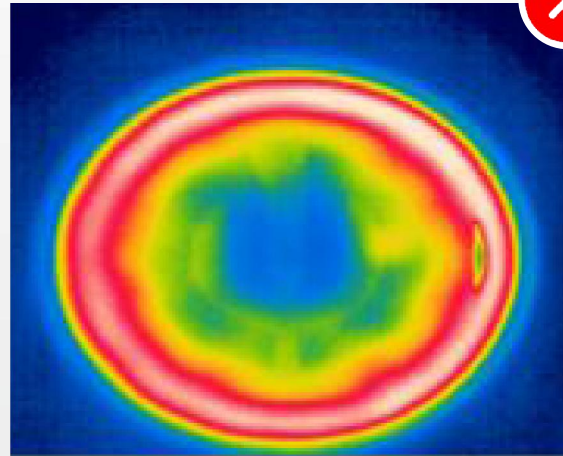
Case 5: WITHOUT WAD



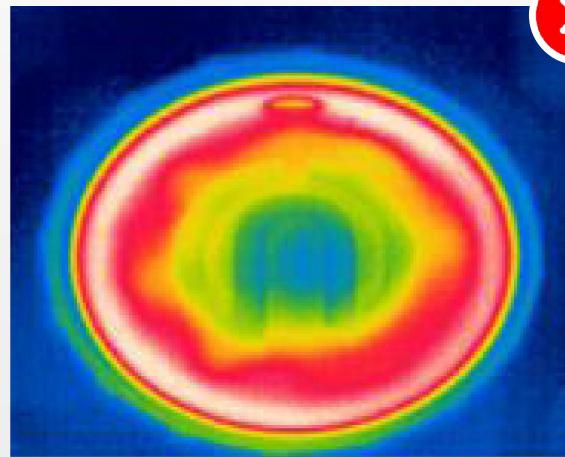
Case 6: DAMAGE WAD



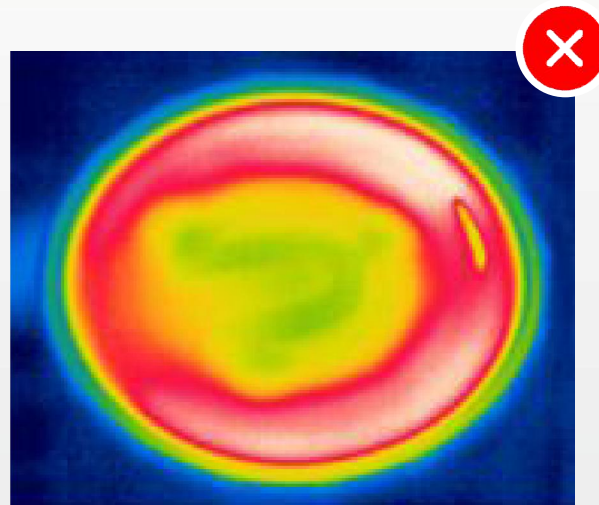
Case 7: PIN HOLE



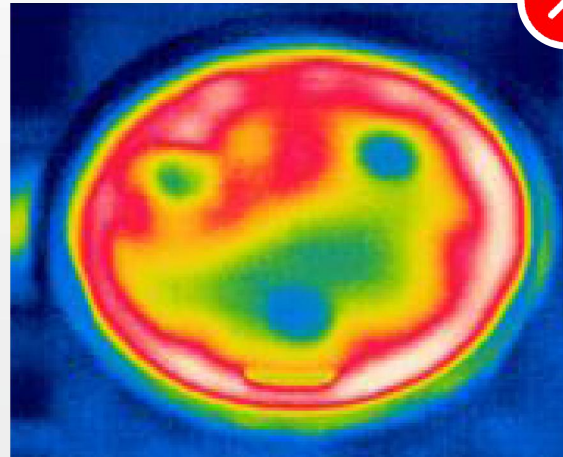
Case 8: CROSS OR LOOSE CAP



Case 9: REVERSE WAD



Case 10: SHIFTED WAD



Added Advantages of Shubham's Technology in Package Integrity Applications



Real-time Quality Testing of Products



Real-time Process Monitoring and Tracking



Access to full records for every Product



Automation and very high Throughputs



No Production Slowdown



Non-destructive and non-interfering

CONTACT

SHUBHAM AUTOMATION PVT LTD

OFFICE

Block B - 201 / 202, Dev Aditya Arcade, Nr Bagbaan Party Plot,
Thaltej, Ahmedabad - 380054, India.

INQUIRY

Sales

✉ Sales@shubhamautomation.co.in

📱 +91 7575801301, +91 79 40081156

Service

✉ Support@shubhamautomation.co.in

📱 +91 7940321041

Career

✉ hr@shubhamautomation.co.in



Thank You